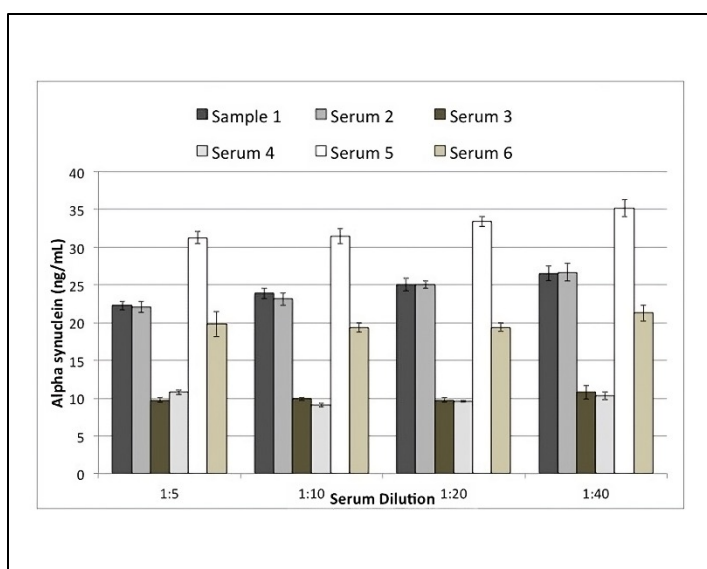


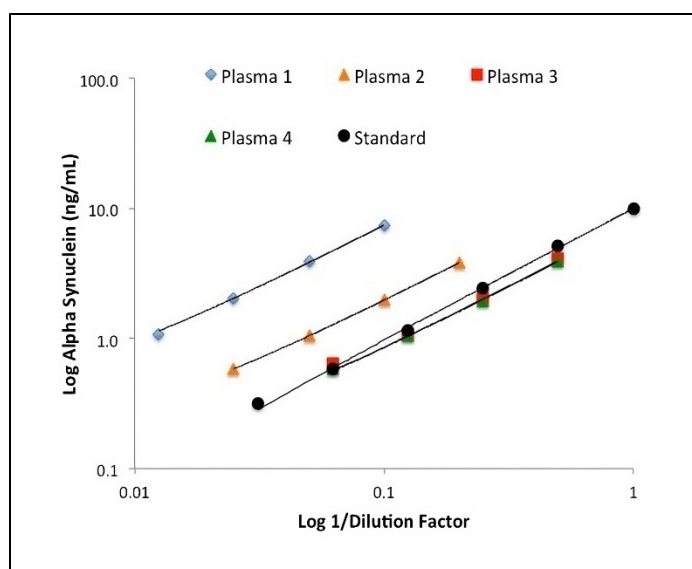
Biosensis Alpha Synuclein Rapid™ ELISA



- Allows the quantification of α -synuclein in human citrate plasma and serum in 4-5 hours
- Testing on human citrate plasma, serum, CSF, and rodent tissue homogenates
- Pre-coated 96 well-strip plates - use only what you need!
- High sensitivity, small sample volumes, and excellent reproducibility
- Contains QC Sample for positive control



Accurate quantification of alpha-synuclein in human serum from healthy individuals across four dilutions.



Parallelism of the calibration curve and diluted citrate-plasma samples from healthy individuals demonstrates accurate quantification of alpha-synuclein in human citrate-plasma.

Biosensis Alpha Synuclein Rapid™ ELISA Kits

Target	Catalog #	Species reactivity	Sensitivity	Range	Target
Alpha-Synuclein Rapid™	BEK-2216-1P	Hu, Rt, Ms	< 25 pg/mL	0.16 - 10 ng/ml	Alpha Synuclein
Alpha-Synuclein Rapid™	BEK-2216-2P	Hu, Rt, Ms	< 25 pg/mL	0.16 - 10 ng/ml	Alpha Synuclein

e: sales@biosensis.com w: www.biosensis.com p: 1800 605-5127

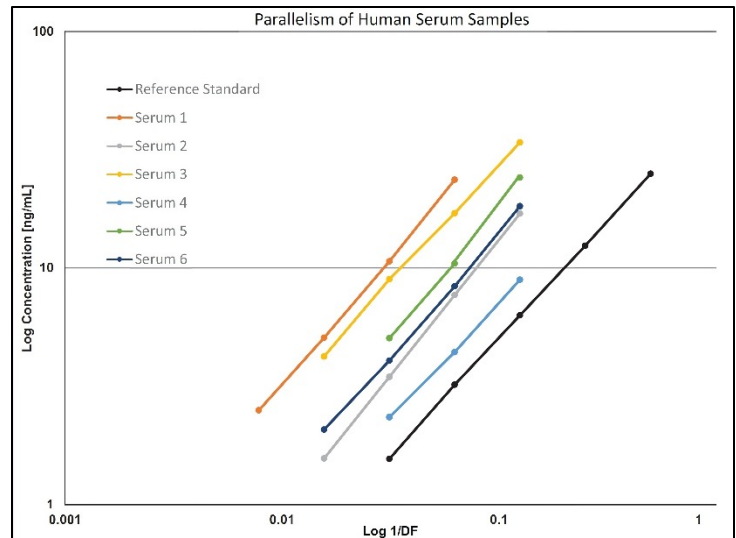
Biosensis Oligomeric Alpha Synuclein Rapid™ ELISA



- An ELISA that is selective for Alpha-Synuclein Oligomers: < 5% cross-reactivity with α , β , and γ synuclein proteins.
- Fast Results: Measures Alpha-Synuclein Oligomers in Human serum, EDTA plasma, and rodent brain samples in 4-5 hours.
- Extensively validated with low intra and inter-assay CVs, spike and recovery, and linearity of dilution assays.
- Complete kit – Includes precoated plates, detection antibody, reference oligomerized standard, oligomerized QC sample, and all buffers.

Dilution Factor	Cross-Reactivity of Spike Protein (%)		
	α -synuclein	β synuclein	γ synuclein
16	8.2	1.8	3.1
32	5.9	1.2	1.1
64	0.2	0	0
Average	4.8	1.5	0.7

A good oligomeric alpha-synuclein ELISA requires exacting oligomeric specificity. Our new kit exhibits minimal cross-reactivity to other synuclein forms.



Biosensis Oligomeric Alpha Synuclein Rapid™ ELISA Kits

Target	Catalog #	Species reactivity	Sensitivity	Range	Target
Oligomeric Alpha-Synuclein Rapid™	BEK-2246-1P	Hu, Rt, Ms	≤ 0.700 pg/mL	0.78–50 ng/ml	Oligomeric Alpha-Synuclein
Oligomeric Alpha-Synuclein Rapid™	BEK-2246-2P	Hu, Rt, Ms	≤ 0.700 pg/mL	0.78–50 ng/ml	Oligomeric Alpha-Synuclein